

官

子

譜

奕小數也韋曜著論陶侃投江以為戒

而好言者多喜為之雖賢士大不免焉何

哉當夫長夏踈簾高秋爽月明庭有落

花隨意一枰轉增幽勝方諸戲具差似雅馴若

乃神其說於爛柯偶其事於擔糞皆過也昔王

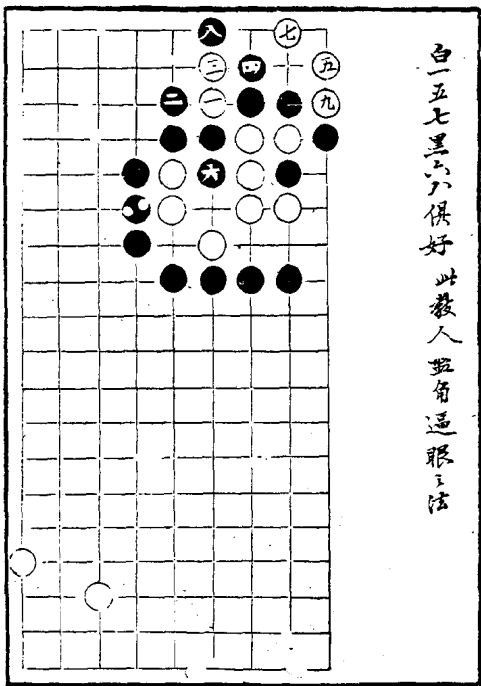
荆公有詩曰莫將戲事擾真常且可隨綠道我

羸戰罷兩奩收白黑一枰何處有虧成知公

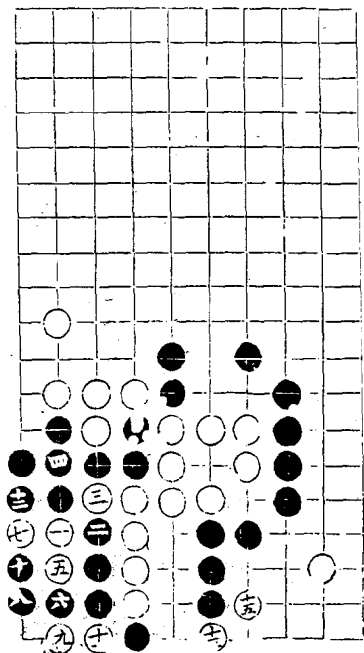
善奕者聊以解嘲云爾然讀其詩何必非達觀

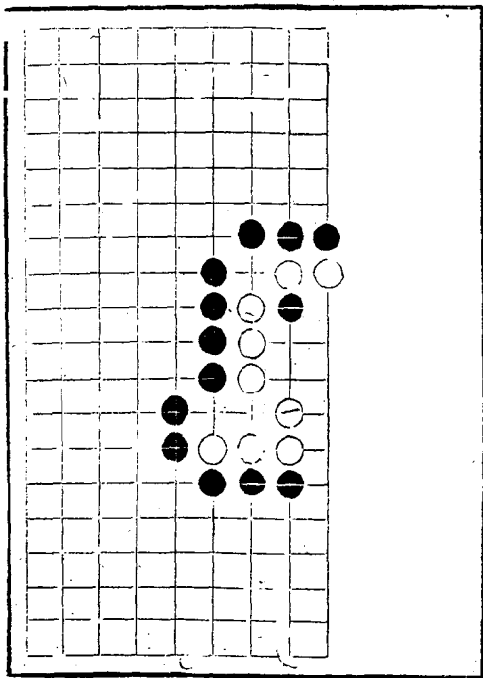
之一助乎

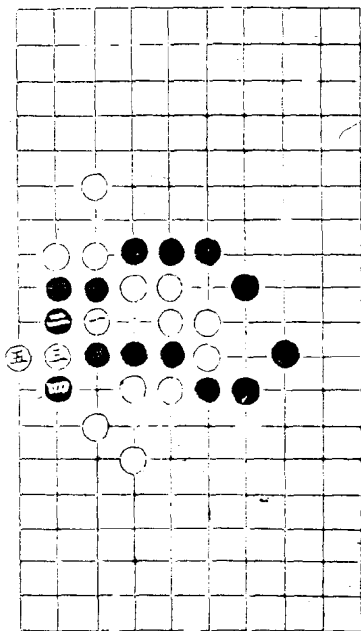
白一五七黑六俱好 此教人 點角逼眼之法

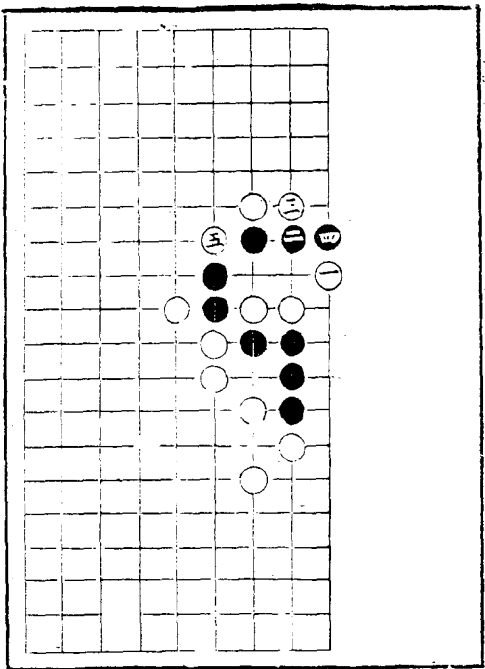


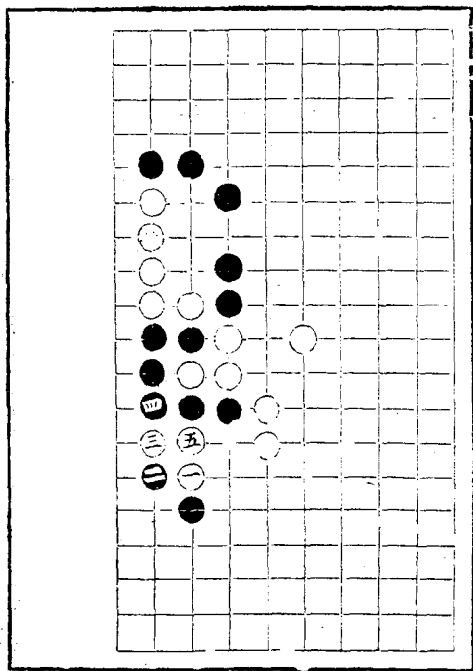
十四全

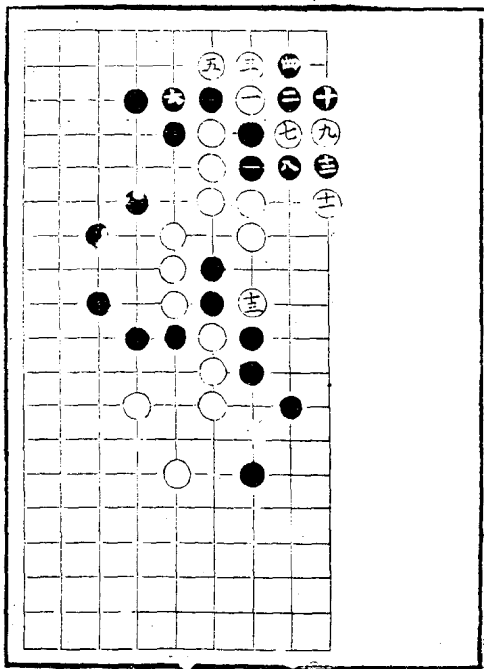


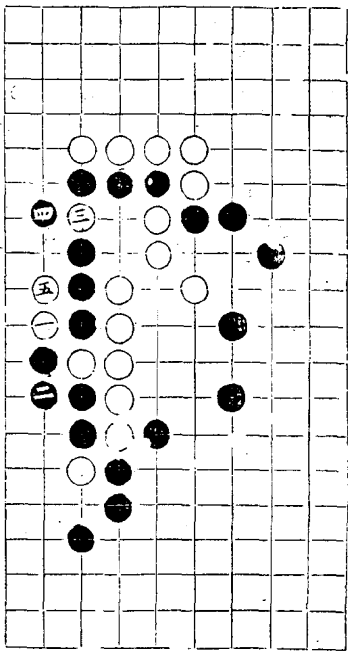


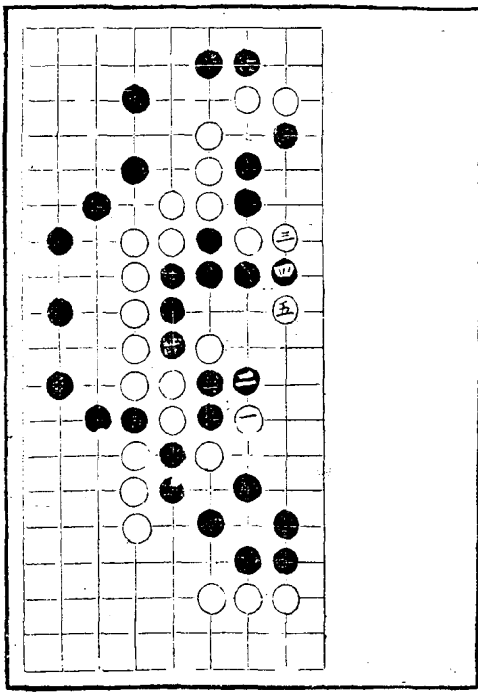


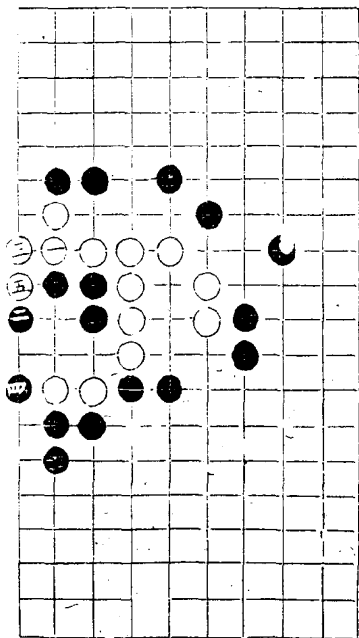


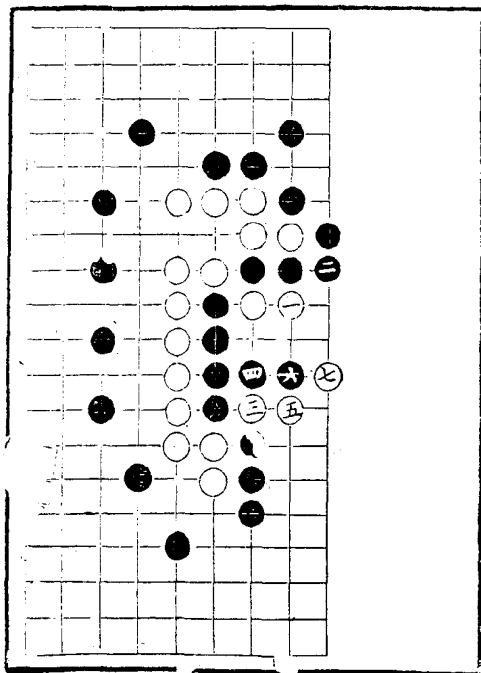


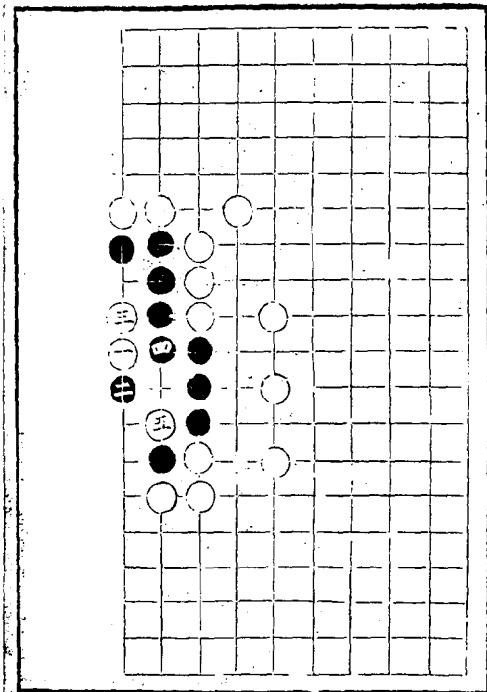


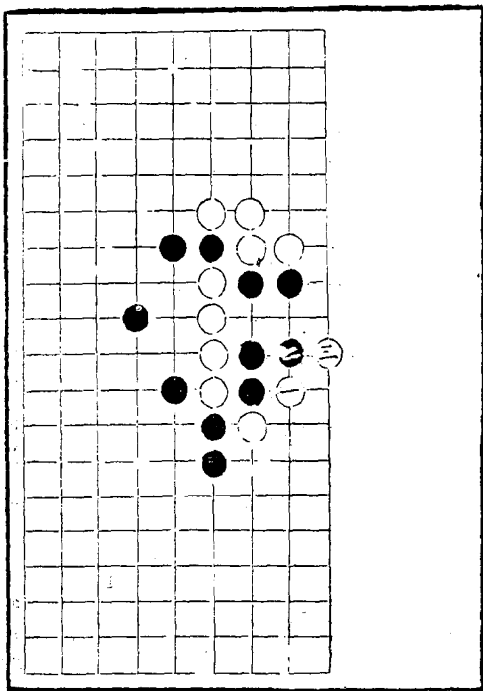


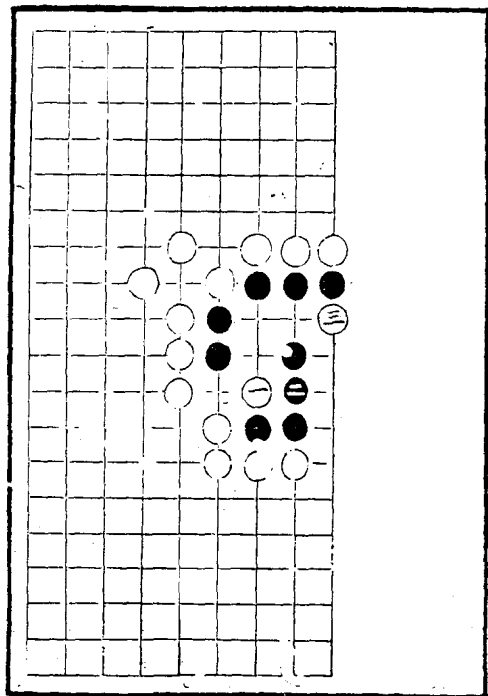


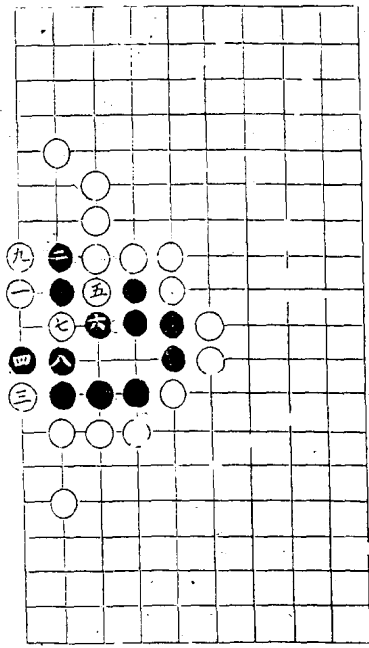


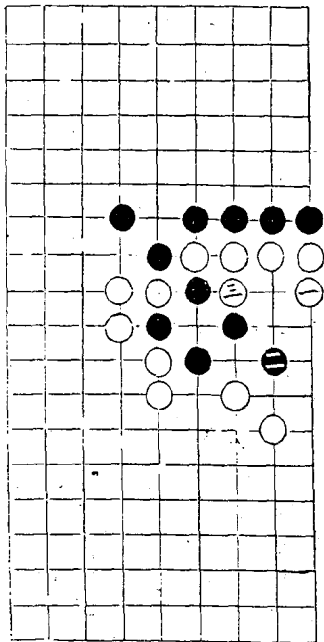


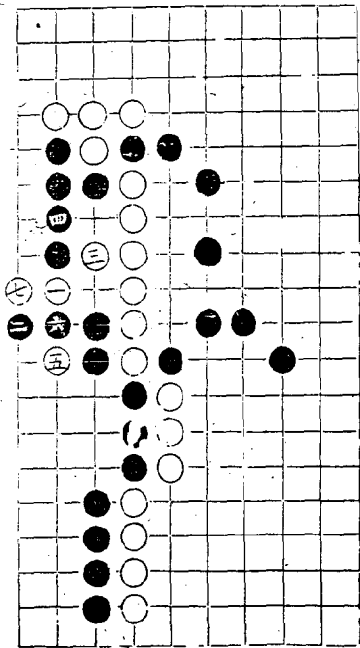


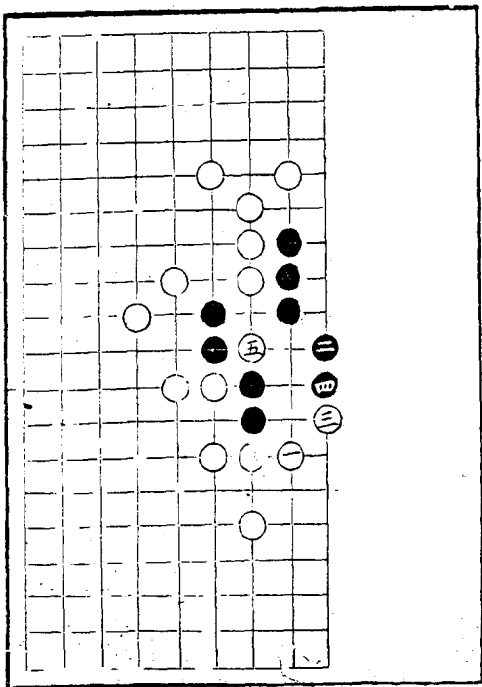


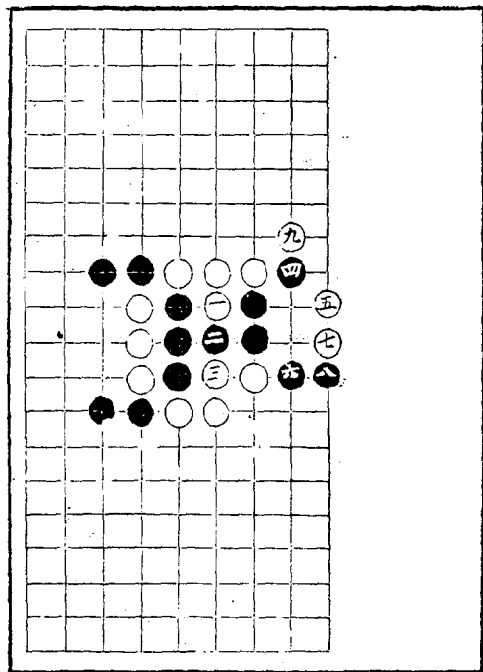




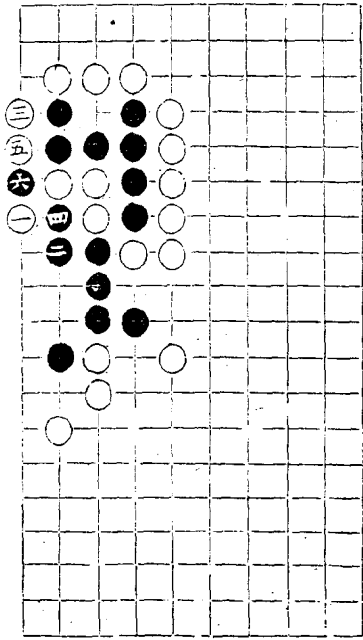


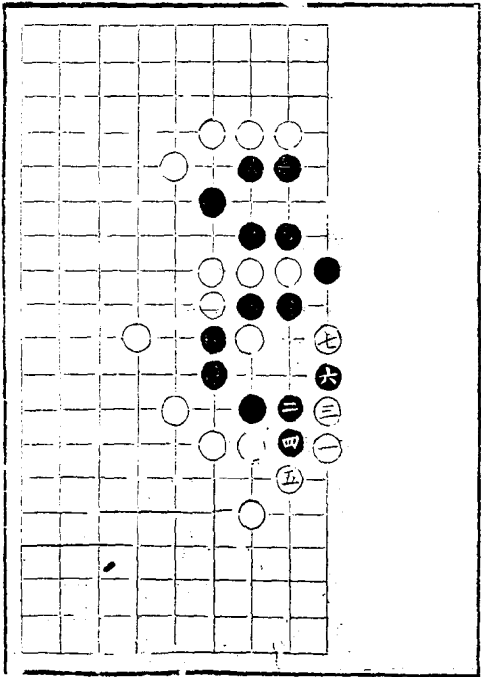


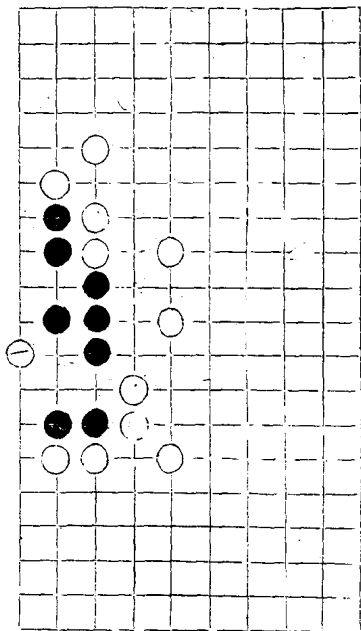




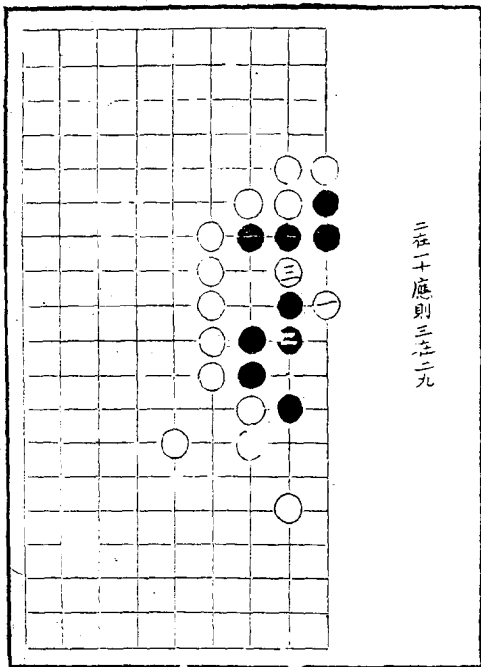
七在二六摸

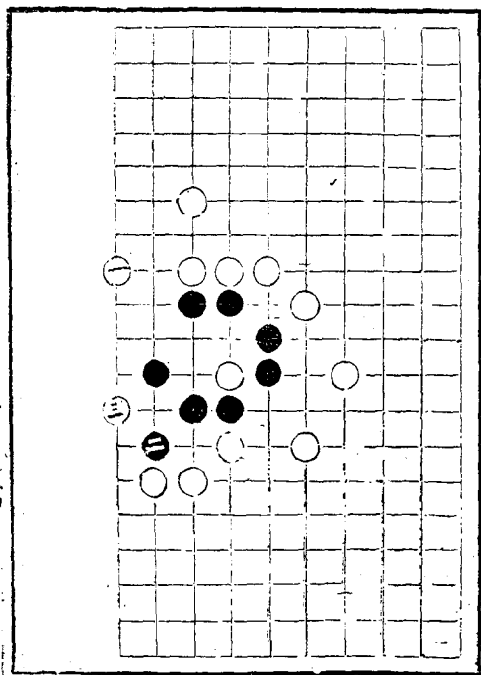


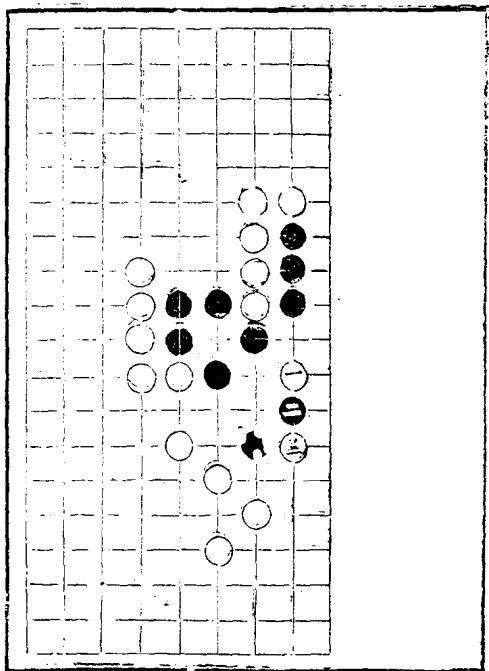


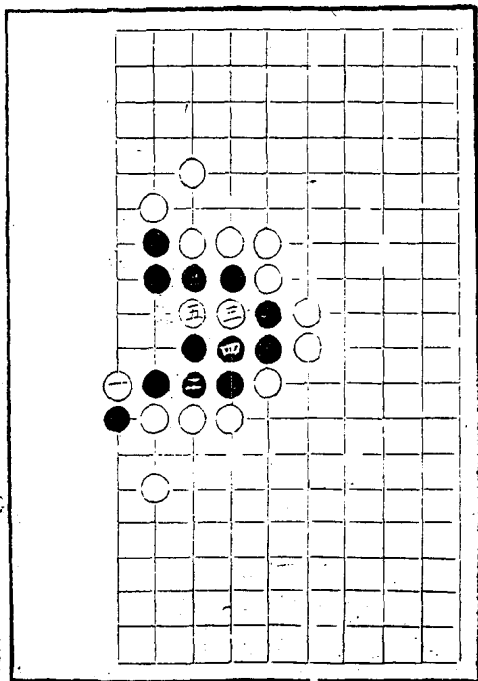


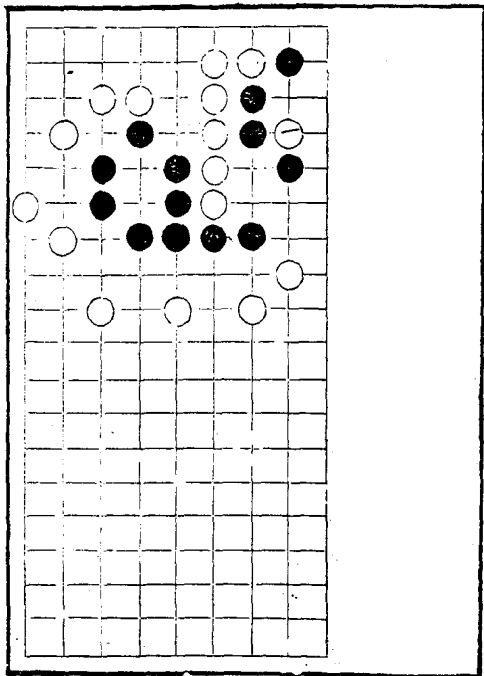
二在二十應則三在二九



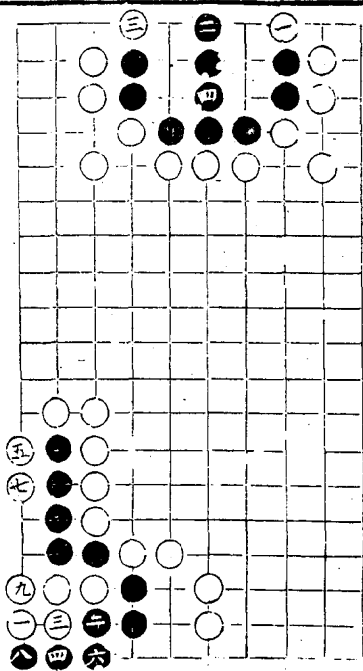


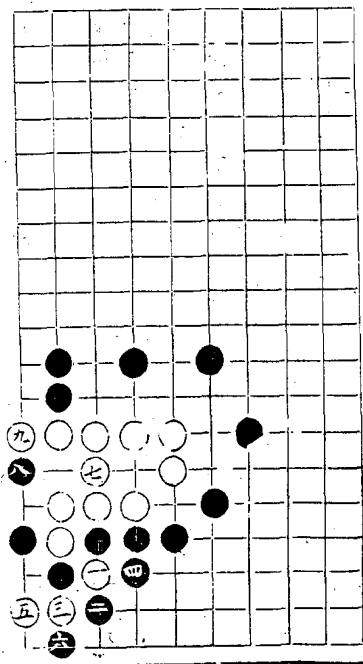






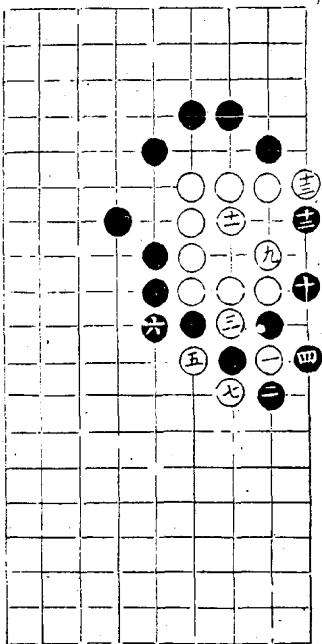
黑活法妙

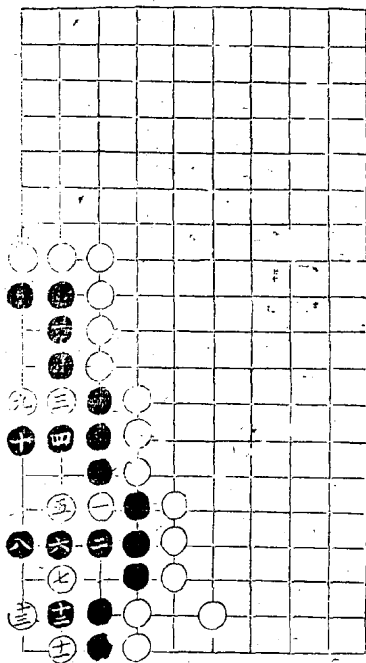




運眼法第一看其得精

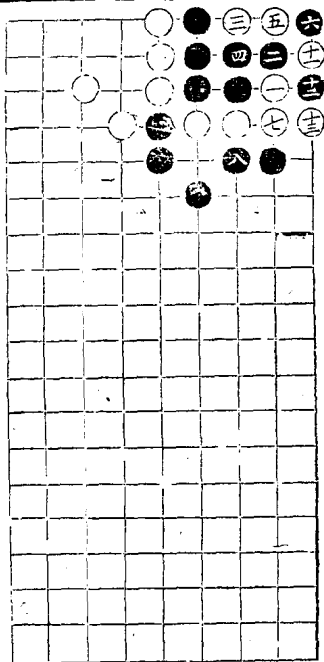
一八全



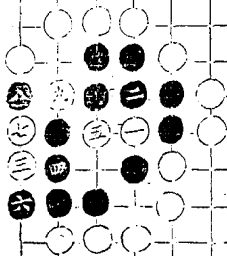


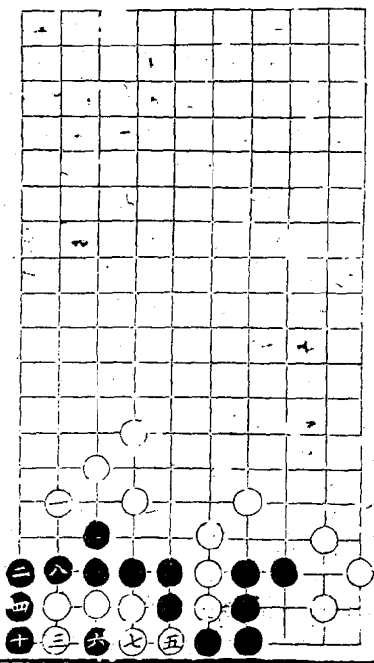
九全五十全三

○白五着九着保物



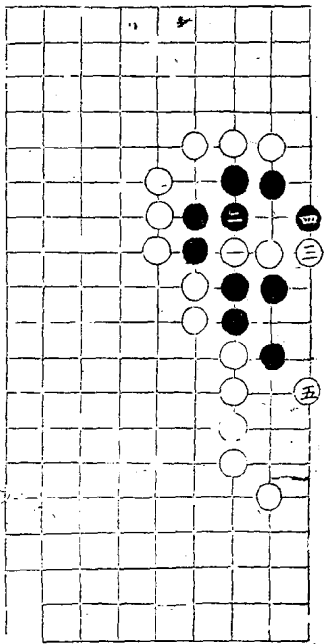
○ 白九着撲妙





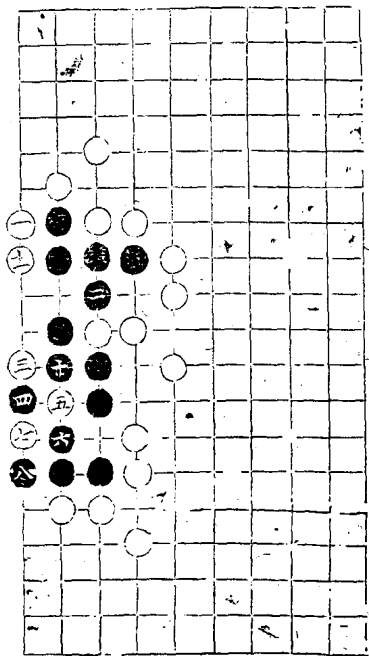
九全六 十一全五
 此破眼
 九著上着供抄
 人難想到
 白第一着以是四三似更宜提

第五着妙石能便成曲四矣

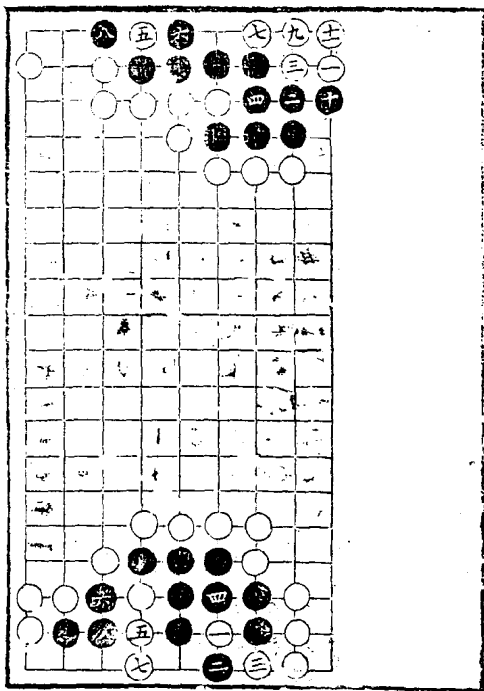


第一着妙務為第五着地步

九合四

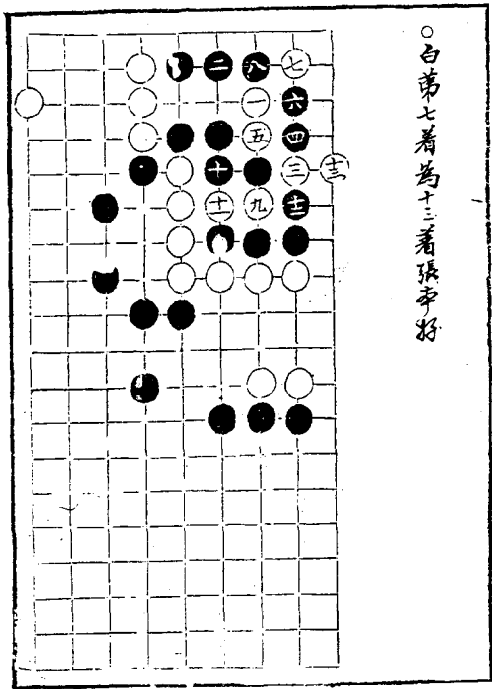


白做五聚
五聚。

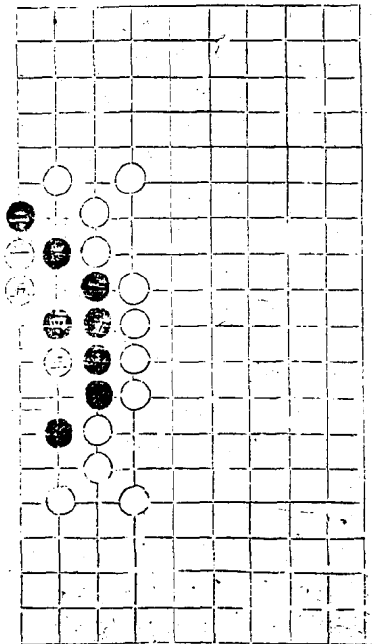


里西不
進。

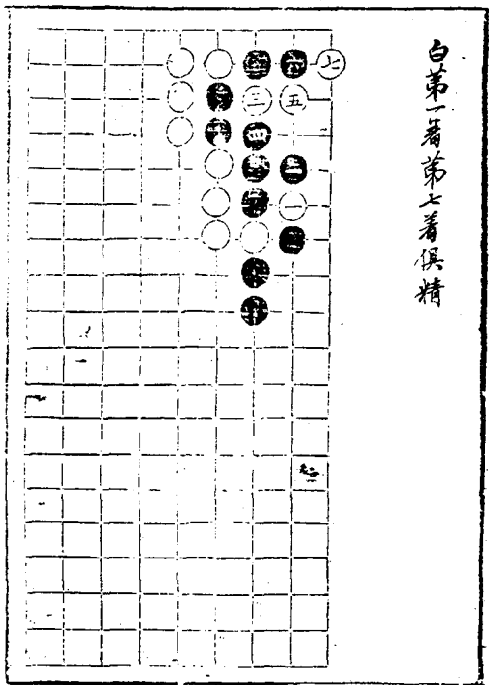
○白第七着為十三着張亭好

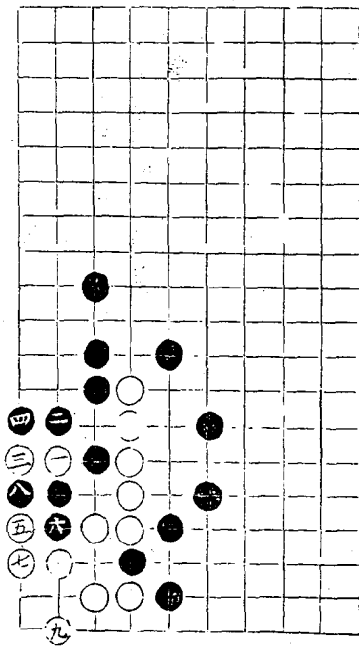


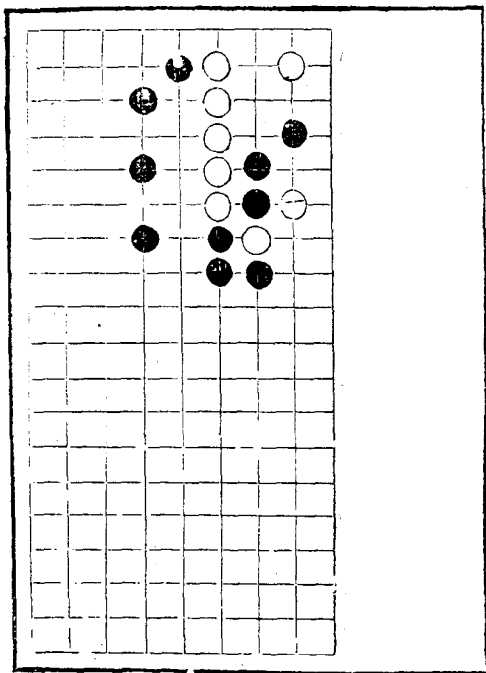
○白三俱存

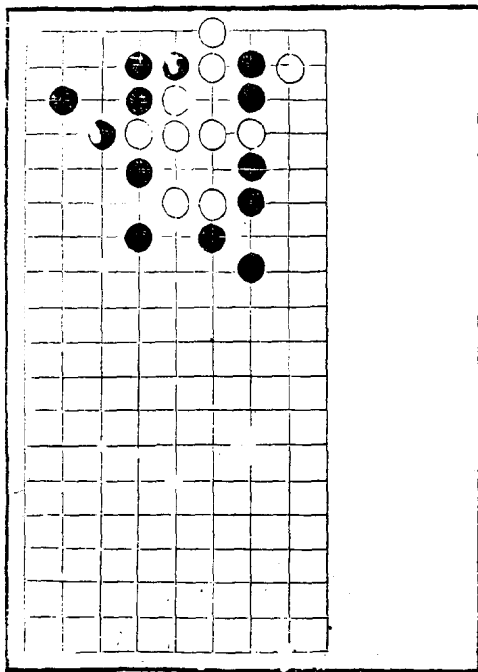


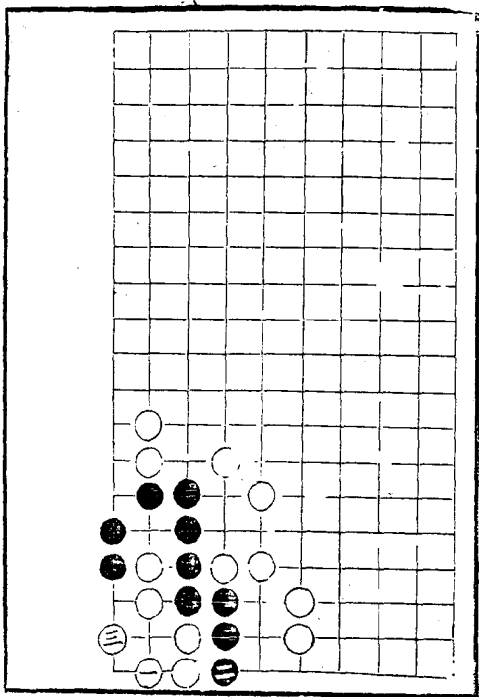
白第一着第七着俱精



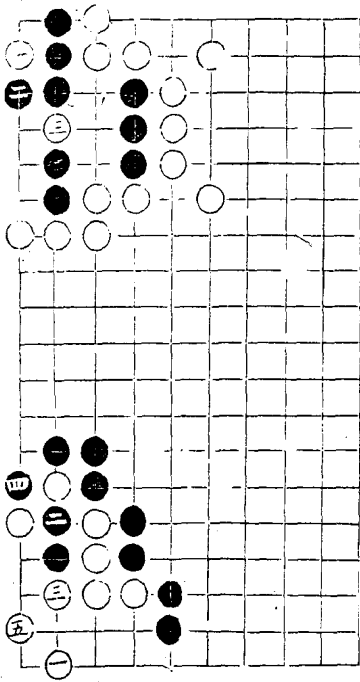




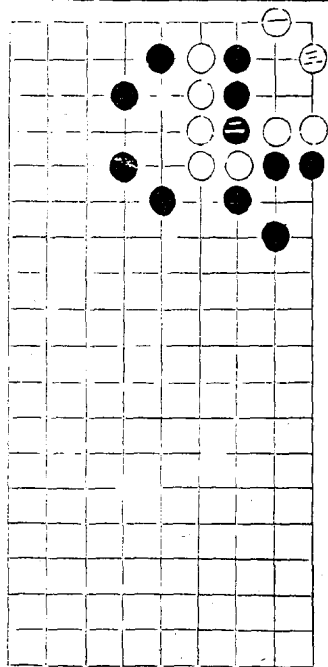




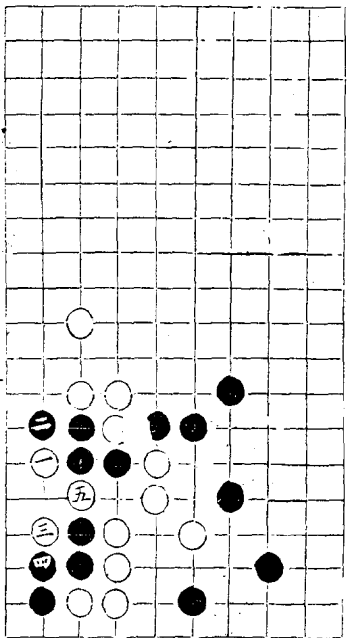
白着妙



白一三着俱妙舍此更無他法

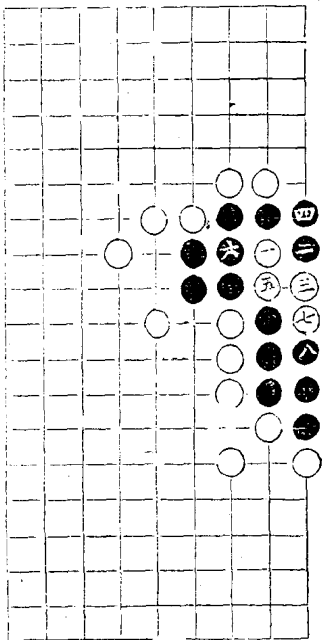


此局中易破且白第一着不立是第五
着於更深

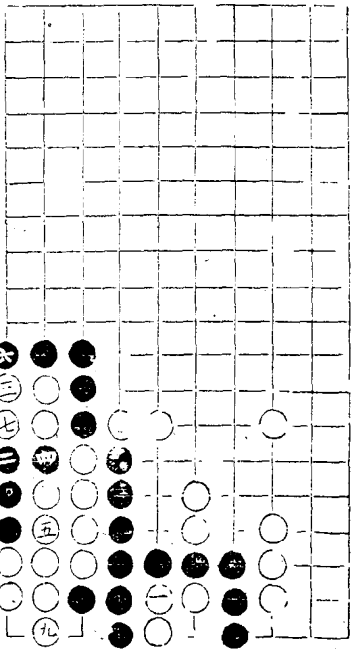


倒脱靴注方淺

九全五



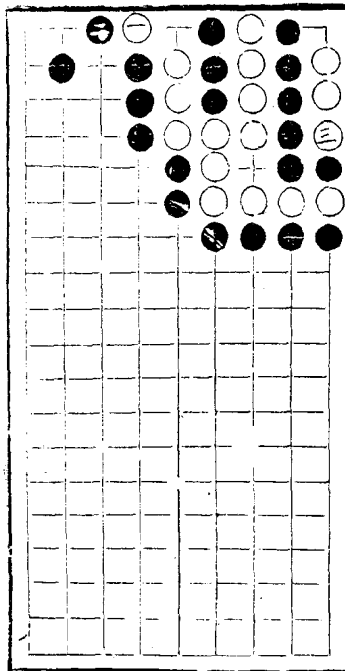
白三黑四俱好白九做眼細



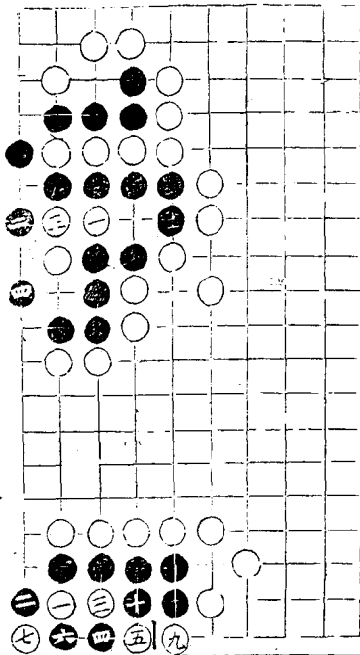
八在一五 十在四 十二在二四
 十三全三 十三在二七

六
 三
 七
 二
 五
 九

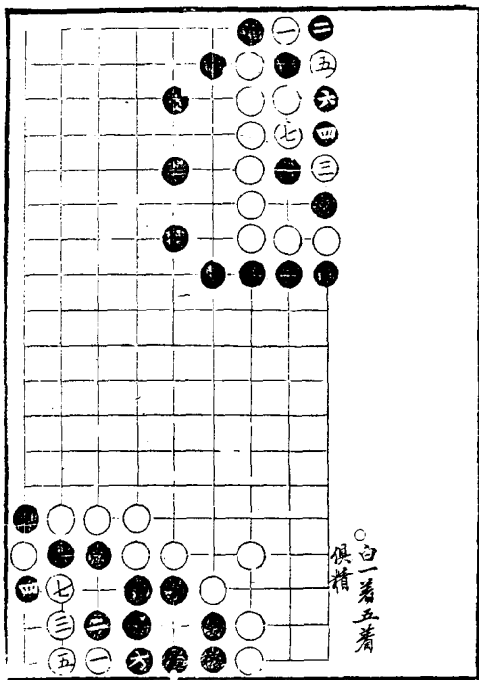
此局變活妙在第一着！撒不往白恐遲一步矣



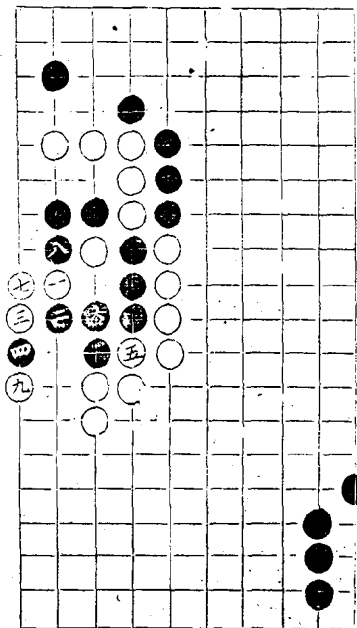
△若三位截白便立下建接不上失子較多
 此清所滿殊恐二在三位白若直下黑即接起白
 子自挂者雖竹鼓起接不上

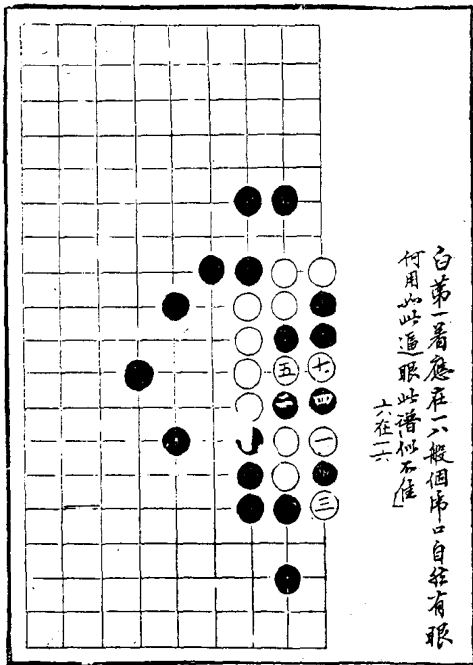


八全六
 白若不至着謬。若在六
 着之位。任可破眼。



○白三着五着好

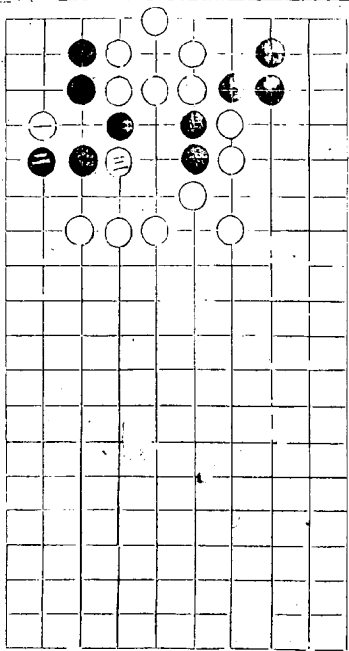




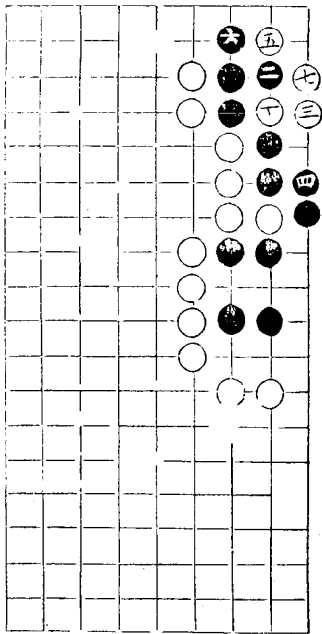
白第一着應在十六投個吊口自往有眼
何用此此逼眼此譜似不佳

六在二六

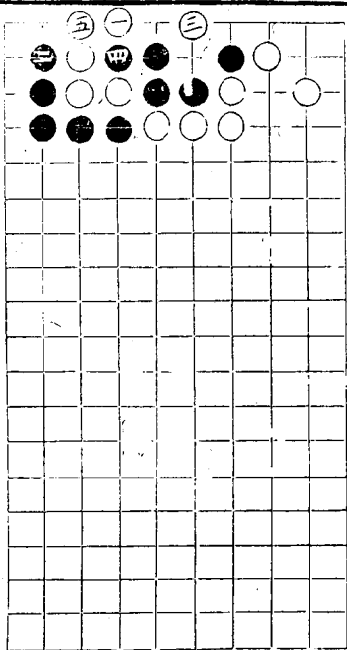
白第三着惟巧然轉使黑棋得以占角殊為失其



白三五七俱得活此局黑杖卒不能有两眼也



○白防黑做眼一着三着俱得法



○白第三着甚妙

七全五八全三

